



Coomarpes

ARGENTINA

Dirección / Address

Dársena de pescadores,
7600 Mar del Plata.

Tel (54 223) 480-0111, 480-0133/9189/0800
Fax (54 223) 481-2731

Ventas / Sales

gerenciageneral@coomarpes.com export1@coomarpes.com
gerenciaventas@coomarpes.com export2@coomarpes.com

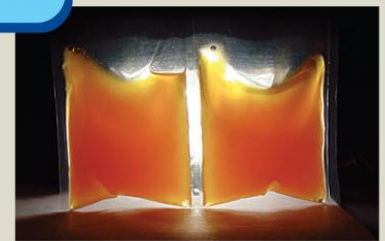
Nuestras plantas procesadoras
operan bajo el plan HACCP

Our processing plants work
under HACCP regulations

DESDE
1950
SINCE



NUEVA LÍNEA
DE PRODUCTOS
IQF
NEW LINE
PRODUCTS



► Aceite de pescado / White fish oil

Free Fatty acid	3% Oleic Acid max.
Moisture and impurities	1% max
Unsaponifiable matter	3% max
Iodine value	150-190 max
Peroxide value	5 mEq O2/kg max
Gardner color	13-15
Antioxidant	200 ppm min
Mineral oil	Negative
Smell	characteristic
Presentation	200 lts in drums



► Harina de pescado / Fish meal

Protein	60 / 64% max
Moisture	10% max
Ash	24% max
Fat	10% max
FFA (Free Fatty Acid)	7-12% max
TVN	110-180 max
Histamine	< 100 ppm
Digestibility(Torry)	92% min
Salt	1,5% max
Peroxide Value	5 meq O2/kg. max
Sand	1% max
Antioxidant (Ethoxyquin)	150 ppm min
Smell	Characteristic
Presentation	Polypropylene bags of 50 kgs

Productos congelados interfoliados,
enteros en blocks

Interleaved frozen products,
whole round in blocks



www.coomarpes.com



Abadejo - Kingclip (Genypterus Blacodes)
Filet sin piel interfoliado
Skinless, interleaved fillets
100 to 1500 grms



Castañeta - Pompfret (Cheilodactylus Bergi)
Entero en bloque
Whole round in block
Filet sin piel interfoliado
Skinless, interleaved fillets
40 to 200 grms



Anchoita - Argentine Anchovy (Engraulis Anchoita)
Entero en bloque - Whole round in block
30 a 50 piezas por kilo - 30 to 50 units per kilo



Besugo - Red Snapper (Pagrus pagrus)
Entero en bloque - Whole round in block
200 to 2000 grms



Corvina - Yellow Croaker (Microponias Furnieri)
Filet sin piel interfoliado
Skinless, interleaved fillets
40 to 360 grms



Lengua - Flounder (Paralichthys Spp)
Filet con piel interfoliado
Skin on, interleaved fillet
1 to 12 onzas



Anchoa de banco - Blue Fish (Pomatomus Saltatrix)
Entero en bloque - Whole round in block
100 to 2000 grms



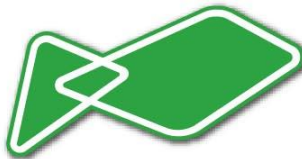
Merluza - Hake (Merluccius Hubbsi)
Filet sin piel interfoliado
Skinless, interleaved fillets
Filet con piel interfoliado
Skin on, interleaved fillet
50 to 500 grms



Mero - Grouper (Acanthistius Brasilianus)
Filet sin piel interfoliado
Skinless, interleaved fillets
1 to 12 onzas



Caballa - Mackerel (Scomber Japonicus)
Entero en bloque - Whole round in block
100 to 2000 grms



Coomarpes
ARGENTINA



Gatuza - Patagonian Smoothhound (Mustelus Schmitti)
Filet sin piel interfoliado
Skinless, interleaved fillets
50 to 300 grms



Palometa - Pompano (Parona Signata)
Filet sin piel interfoliado
Skinless, interleaved fillets
Filet con piel interfoliado
Skin on, interleaved fillet
50 to 360 grms



Pez Palo - Flathead (Percophis Brasiliensis)
Filet sin piel interfoliado
Skinless, interleaved fillets
70 to 360 grms



Pargo - Argentine Croaker (Umbrina Canosai)
Filet sin piel interfoliado
Skinless, interleaved fillets
50 to 360 grms



Pescadilla - Sea Trout (Cynoscion Striatus)
Filet sin piel interfoliado
Skinless, interleaved fillets
Filet con piel interfoliado
Skin on, interleaved fillet
50 to 360 grms



Calamar - Squid (Illex Argentina)
Entero en bloque - Whole round in block, 100 a 500 grms
Aleta en bloque - Fin in block
Tentaculo en bloque - Tentacle in block
Tubo en bloque - Tube in block



Pez Angel - Angel Shark (Squatina Argentina)
Filet sin piel interfoliado
Skinless, interleaved fillets
100 to 400 grms



Salmon de Mar - Brazilian Sandperch (Pinguipes Spp)
Filet sin piel interfoliado
Skinless, interleaved fillets
200 to 2000 grms



Cornalito
Silverside (Sorgentinia Incisa)
Entero en bloque - Whole round in block
4 to 10 grms



Raya - Skate (Raja Spp)
Aleta de raya sin piel interfoliado
Skinless, interleaved skate wings
100 to 1500 grms



Trilla - Red Mullet (Mullus Argentinae)
Entero en bloque - Whole round in block
70 to 200 grms